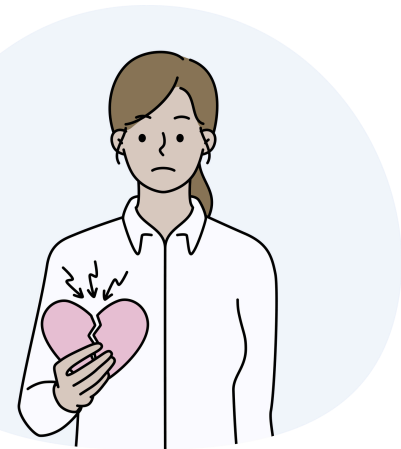


Have you experienced the death of a close loved one?

Seeking participants for a paid research study on grief and the brain.



Who can participate?

You may qualify if you **experienced the death of a close loved one** (such as a family member, friend, partner, or pet) **at least 12 months ago**, and:

- You are between **30 and 75 years old**.
- You are willing to take part in a **brain scan (MRI)**.

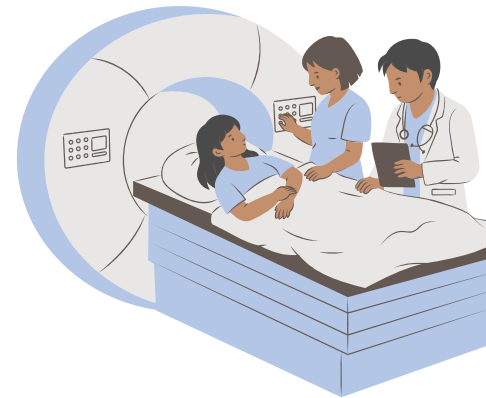
MRI is a non-invasive type of brain imaging that does not use radiation or contrast dyes.

What does the study involve?

There are 2 visits, scheduled at your convenience:

- **Day 1:** Clinical interview and questionnaires.
- **Day 2:** Come to Mount Sinai to have your brain scanned while you play simple computer games.

Enrolled participants will be paid for their time.



To learn more, please scan the QR code below, email GriefNeuroStudy@gmail.com, or call/text (646) 580-0493.

Who cannot participate in this study?

- People who have had a concussion, stroke, or brain injury.
 - People who have a condition that impacts thinking, learning, and memory (such as schizophrenia, ADHD, or dementia).
 - People who have a pacemaker, shunt, permanent retainer, shrapnel, or certain other types of metal in their body.
 - People who are claustrophobic or unwilling to have an MRI.
- Contact the research team for additional information.

